



SPRING / SUMMER 2024
SCABAL TREND STORIES



Jacket

Model – Curzon

THE ROYAL
706141



Trouser

Model – V700

THE ROYAL
706141

Jacket

Model – Soho

CROSSOVER
754876



Trouser

Model – V700

CROSSOVER
754876

THE ROYAL

One of the Scabal foundation collections, The Royal offers a large selection of the highest quality Super 100's suiting fabrics. At 280gm, this is a year-round staple collection. Presenting over 80 articles there is an abundance of choice across checks, glen checks, stripes, patterns and micro designs and shadow weaves alongside a large selection of plains.

Colours remain within the sartorial palette, blues, greys, browns and blacks with small colour pops appearing within the checks to add interest and depth.

CROSSOVER

Crossover is becoming the go-to collection for spring summer wardrobes. The colours and patterns are updated regularly but the concept remains the same. Fabrics are designed in pairs with one a plain and one a check, created to work together or separately. Select a suit from each design and then mix and match them to create unique outfits for every occasion.

This is our most colourful collection to date, constructed in a Super 130's wool the fabric has a soft, lightweight feel which is enhanced by the colour palette. Opening with a selection of soft pastel shades, combinations of light blue, pink, cream, grey and purple all feature the collection then becomes more intense with darker shades of tobacco, green, cobalt blue and browns creating checks of depth and richness.

PRODUCT DETAILS

Formal Shirt:

· 300234

Knitwear:

· Penryn – 009_459 Plum

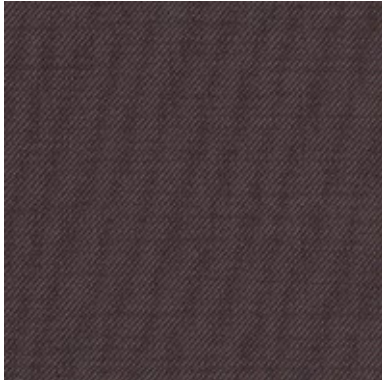


THE ARTIST

Jacket

Model – Kenton

PRISMA
754477



Trouser

Model – W600

PRISMA
754477

Jacket

Model – Kenton

CROSSOVER
754880



Trouser

Model – V700

CROSSOVER
754880

PRISMA

Inspired by the way light reflects on glass, the Prisma collection is a concise selection of lightweight summer suiting in a rainbow of colours.

This Super 120's wool, has a contrasting warp and weft, unusually the weft is a lighter yarn with the warp the darker colour this adds a unique character and gives a traditional bowater appearance to the fabrics. The result is a contemporary collection with a soft dry hand feel making it ideal for summer suiting.

CROSSOVER

Crossover is becoming the go-to collection for spring summer wardrobes. The colours and patterns are updated regularly but the concept remains the same. Fabrics are designed in pairs with one a plain and one a check, created to work together or separately. Select a suit from each design and then mix and match them to create unique outfits for every occasion.

This is our most colourful collection to date, constructed in a Super 130's wool the fabric has a soft, lightweight feel which is enhanced by the colour palette. Opening with a selection of soft pastel shades, combinations of light blue, pink, cream, grey and purple all feature the collection then becomes more intense with darker shades of tobacco, green, cobalt blue and browns creating checks of depth and richness.

PRODUCT DETAILS

Formal Shirt:

· 300230

Formal Shirt:

· 300146



Jacket

Model – Kenton

TAORMINA
853420

Trouser

Model – V700

PURE LINEN
802993



TAORMINA

Named after the exclusive resort town on the coast of Scilly, Taormina returns this season refreshed and renewed. Designed with summer in mind the collection is relaxed and colourful with a combination of different constructions which fall into 3 chapters.

9 articles in a wool, silk and linen mix, open the range, this traditional summer combination creates cloths that are lightweight and naturally breathable with the silk adding an additional element of luxury.

New to the Scabal collections is the introduction of 11 articles made in Bamboo Viscose, this unique material adds an unrivalled richness to the colours along with a soft sheen that illuminates the fabrics and gives it a soft silky touch.

Colours range from bright and dramatic, reds, oranges, blues, purples and tobacco to more considered combinations of blues, browns and creams.

Closing the collection is a small selection of structured plains in dark blues designed to create a modern blazer ideal for those with more conservative tastes.

PURE LINEN

Pure Linen is the must-have collection for summer staples. The Scabal collection offers a selection of weights, feels and colours to answer the needs of summer tailoring.

Opening with 20 delavé articles, this soft washed linen is available in colours ranging from bright reds, vibrant greens, sky blues as well some essential shades of dark blues, light creams and natural browns.

Moving through the collection you will see 8 shades in a heavier 260gm and for those looking for more structure a small selection at 400gm again in the essential linen colours, off white, cream, beige and navy blue.

PRODUCT DETAILS

Knitwear:

· Cawdor – 009_459 Plum



SPRING / SUMMER 2024

Jacket

Model – Kenton

RHAPSODY
802947



Trouser

Model – W700

NEW DELUXE
501553

RHAPSODY

Rhapsody returns this season resplendent with a selection of new colours. The collection opens with a selection of brightly coloured herringbones in a wool and silk mix. They have an elegant sheen which is achieved by bringing the silk to the face of the weave and demand to be seen in colours ranging from yellow through turquoise to purples.

This leads into another array of herringbones, these have more muted colours and a more distinct pattern which adds a richness to the colours of the superfine merino wool.

The final chapter showcases a soft basket weave which brings a easy texture to the fabrics. Colours here are more subtle, cool greys, light blues and olive green all feature alongside classic navy and black ideal for more traditional tastes.

This really is a collection for the colour loving jacket connoisseur.

NEW DELUXE

One of the foundations of the Scabal fabric collections, New Deluxe has been renewed for a new decade. A true year-round collection of plains, with over 70 colours to choose from, including 12 brand new shades and the introduction of a selection of melanges in classic suiting colours for the gentleman that wants some added interest and texture.

The Super 100's wool makes for a very adaptable cloth that is as easy to care for, as it is to tailor and at 260gm the Prunelle weave adds a comfortable wearing quality making it a versatile choice for suits, trousers, or jackets.

PRODUCT DETAILS

Knitwear:

· Penryn – 009_459 Plum



SPRING / SUMMER 2024

Jacket

Model – Soho

MOSAIC
853441



Trouser

Model – W700

NEW DELUXE
501553

MOSAIC

Mosaic is a concise collection of jacketing fabrics that feels like the essence of summer. Designed to celebrate checks, this collection is alive with colour both in the ground weave and in the patterns themselves.

The collection presents a rainbow of colour combinations, purples combined with light greys, creams with light blues and brighter blues with soft reds. The key seasonal colours are blues, greens, reds and browns which all feature either as the main colour or highlights within the checked patterns.

The 100% Super 130's wool is finished to give a dry hand feel which makes it as practical as it is beautiful choice for summer jackets.

NEW DELUXE

One of the foundations of the Scabal fabric collections, New Deluxe has been renewed for a new decade. A true year-round collection of plains, with over 70 colours to choose from, including 12 brand new shades and the introduction of a selection of melanges in classic suiting colours for the gentleman that wants some added interest and texture.

The Super 100's wool makes for a very adaptable cloth that is as easy to care for, as it is to tailor and at 260gm the Prunelle weave adds a comfortable wearing quality making it a versatile choice for suits, trousers, or jackets.

PRODUCT DETAILS

Formal Shirt:

· 300368



THE ARTIST

Jacket

Model – Soho

MOSAIC
853450



Trouser

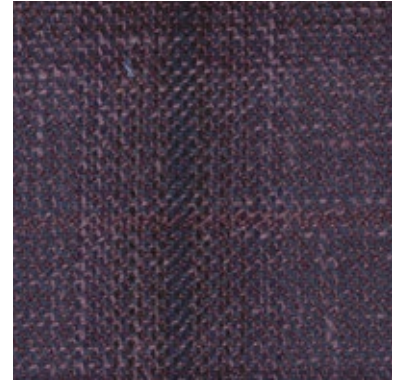
Model – V700

CASHMERE
COTTON
501691

Jacket

Model – Soho

TAORMINA
853417



Trouser

Model – G720

PURE LINEN
802267

MOSAIC

Mosaic is a concise collection of jacketing fabrics that feels like the essence of summer. Designed to celebrate checks, this collection is alive with colour both in the ground weave and in the patterns themselves.

The collection presents a rainbow of colour combinations, purples combined with light greys, creams with light blues and brighter blues with soft reds. The key seasonal colours are blues, greens, reds and browns which all feature either as the main colour or highlights within the checked patterns.

The 100% Super 130's wool is finished to give a dry hand feel which makes it as practical as it is beautiful choice for summer jackets.

TAORMINA

Named after the exclusive resort town on the coast of Scilly, Taormina returns this season refreshed and renewed. Designed with summer in mind the collection is relaxed and colourful with a combination of different constructions which fall into 3 chapters.

9 articles in a wool, silk and linen mix, open the range, this traditional summer combination creates cloths that are lightweight and naturally breathable with the silk adding an additional element of luxury.

New to the Scabal collections is the introduction of 11 articles made in Bamboo Viscose, this unique material adds an unrivalled richness to the colours along with a soft sheen that illuminates the fabrics and gives it a soft silky touch.

Colours range from bright and dramatic, reds, oranges, blues, purples and tobacco to more considered combinations of blues, browns and creams.

Closing the collection is a small selection of structured plains in dark blues designed to create a modern blazer ideal for those with more conservative tastes.

PRODUCT DETAILS

Knitwear:

· Penryn – 009_420 Purple

Knitwear:

· Sefton – 114_457 Violet Melange



SPRING / SUMMER 2024

Outerwear

Model – Ludlow 1

FINP
EXCLUSIVE
FABRICS
602210



Casual

Trouser

Model – Helston

CASHMERE
COTTON
501691

LUDLOW I

The Ludlow has been designed as a combination of sportswear utility and Savile Row elegance. Functionality has been considered in every detail. The front and pocket zips are constructed with rubber zip tape, the chest pocket has an invisible zip, the standing collar has hidden press studs to give it an elegant finish, there is a hidden hood within the collar, hidden lycra cuffs to keep out the cold and an adjustable drawstring waistband for added comfort and to keep the jacket in place when moving.

Available in a selection of technical fabrics designed to enhance its sporty appearance and add an additional layer of technical protection with their weather resistance properties.

PRODUCT DETAILS

Knitwear:

· Penryn – 009_137 Light Grey



Jacket

Model – Soho

TAORMINA
853426**Trouser**

Model – V700

CASHMERE
COTTON
501695**Jacket**

Model – Soho

CROSSOVER
754874**Trouser**

Model – W700

CROSSOVER
754874**TAORMINA**

Named after the exclusive resort town on the coast of Scilly, Taormina returns this season refreshed and renewed. Designed with summer in mind the collection is relaxed and colourful with a combination of different constructions which fall into 3 chapters.

9 articles in a wool, silk and linen mix, open the range, this traditional summer combination creates cloths that are lightweight and naturally breathable with the silk adding an additional element of luxury.

New to the Scabal collections is the introduction of 11 articles made in Bamboo Viscose, this unique material adds an unrivalled richness to the colours along with a soft sheen that illuminates the fabrics and gives it a soft silky touch.

Colours range from bright and dramatic, reds, oranges, blues, purples and tobacco to more considered combinations of blues, browns and creams.

Closing the collection is a small selection of structured plains in dark blues designed to create a modern blazer ideal for those with more conservative tastes.

CROSSOVER

Crossover is becoming the go-to collection for spring summer wardrobes. The colours and patterns are updated regularly but the concept remains the same. Fabrics are designed in pairs with one a plain and one a check, created to work together or separately. Select a suit from each design and then mix and match them to create unique outfits for every occasion.

This is our most colourful collection to date, constructed in a Super 130's wool the fabric has a soft, lightweight feel which is enhanced by the colour palette. Opening with a selection of soft pastel shades, combinations of light blue, pink, cream, grey and purple all feature the collection then becomes more intense with darker shades of tobacco, green, cobalt blue and browns creating checks of depth and richness.

PRODUCT DETAILS

Knitwear:

· Cawdor – 114_033 Stone Beige Melange

Knitwear:

· Kendal – 009_026 Cream



Jacket

Model – Kenton

TAORMINA
853413



Casual

Trouser

Model – Perth

PURE LINEN
803009

Jacket

Model – Soho

RHAPSODY
802950

Trouser

Model – W710

NEW DELUXE
501501



TAORMINA

Named after the exclusive resort town on the coast of Scilly, Taormina returns this season refreshed and renewed. Designed with summer in mind the collection is relaxed and colourful with a combination of different constructions which fall into 3 chapters.

9 articles in a wool, silk and linen mix, open the range, this traditional summer combination creates cloths that are lightweight and naturally breathable with the silk adding an additional element of luxury.

New to the Scabal collections is the introduction of 11 articles made in Bamboo Viscose, this unique material adds an unrivalled richness to the colours along with a soft sheen that illuminates the fabrics and gives it a soft silky touch.

Colours range from bright and dramatic, reds, oranges, blues, purples and tobacco to more considered combinations of blues, browns and creams.

RHAPSODY

Rhapsody returns this season resplendent with a selection of new colours. The collection opens with a selection of brightly coloured herringbones in a wool and silk mix. They have an elegant sheen which is achieved by bringing the silk to the face of the weave and demand to be seen in colours ranging from yellow through turquoise to purples.

More subtle, cool greys, light blues and olive green all feature alongside classic navy and black ideal for more traditional tastes.

PRODUCT DETAILS

Knitwear:

· Sefton – 114_033 Stone Beige Melange

Knitwear:

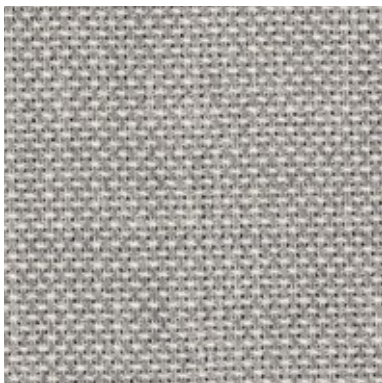
· Cawdor – 009_026 Cream



Outerwear

Model – Exmoor 1

RHAPSODY
802965



Trouser

Model – V700

CASHMERE
COTTON
601695

EXMOOR

A Safari Jacket for the urban jungle. This is a statement summer garment, lightweight, unlined and easy to wear. It can be dressed up with a shirt and even a tie or dressed down with a light tee or sweater underneath. The belted waist, large patch pockets and button shoulder strap have a tropical military feel but when presented in a soft hopsack from the Rhapsody collection it takes on a far more casual feel. Sleeves can be buttoned, open or rolled up to suit the occasion.

RHAPSODY

Rhapsody returns this season resplendent with a selection of new colours. The collection opens with a selection of brightly coloured herringbones in a wool and silk mix. They have an elegant sheen which is achieved by bringing the silk to the face of the weave and demand to be seen in colours ranging from yellow through turquoise to purples.

This leads into another array of herringbones, these have more muted colours and a more distinct pattern which adds a richness to the colours of the superfine merino wool.

The final chapter showcases a soft basket weave which brings a easy texture to the fabrics. Colours here are more subtle, cool greys, light blues and olive green all feature alongside classic navy and black ideal for more traditional tastes.

This really is a collection for the colour loving jacket connoisseur.

PRODUCT DETAILS

Knitwear:

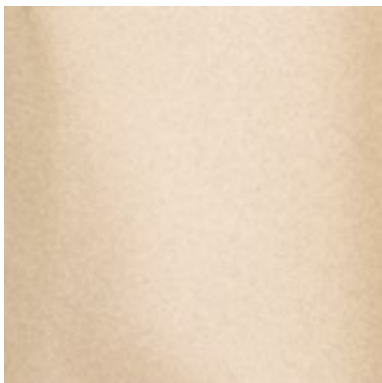
- Contin – 114_138 Grey Melange



Outerwear

Model – Rannoch 1

FINP
EXCLUSIVE
403591



Casual

Trouser

Model – Perth

PURE LINEN
802993

RANNOCH 1

The Rannoch sits alongside the Scabal Lomond family of macs. It is designed to be a long car coat with a simple silhouette that can easily be coordinated with any outfit, smart or casual. It has a front closure with 5 buttons, slanted welt pockets and can be ordered with a matching belt to give it the feeling of a Trench Coat. Inside there are button secured pockets along with a phone pocket and it is ½ lined with a combination of the outer jacket fabric and a cupro.

In line with the feel of a traditional mac The Rannoch is available in our new water-repellent cotton in a selection of colours.

PURE LINEN

Pure Linen is the must-have collection for summer staples. The Scabal collection offers a selection of weights, feels and colours to answer the needs of summer tailoring.

Opening with 20 delavé articles, this soft washed linen is available in colours ranging from bright reds, vibrant greens, sky blues as well some essential shades of dark blues, light creams and natural browns.

Moving through the collection you will see 8 shades in a heavier 260gm and for those looking for more structure a small selection at 400gm again in the essential linen colours, off white, cream, beige and navy blue.

PRODUCT DETAILS

Knitwear:

· Harrow – 010_134 Mid Grey Melange



SPRING / SUMMER 2024

Outerwear

Model – Nelson 4

FINP
EXCLUSIVE
403591



Trouser

Model – W700

PURE LINEN
803009



NELSON 4

A peacoat is normally reserved for the colder months but the new Scabal Nelson is designed in lighter fabrics to give the same look a summer feel. Unlined with English seams, the Nelson can be worn open or closed to create different looks. This season sees the introduction of a selection of new fabrics including a technical water repellent cotton in classic cream or navy colourways.

PURE LINEN

Pure Linen is the must-have collection for summer staples. The Scabal collection offers a selection of weights, feels and colours to answer the needs of summer tailoring.

Opening with 20 delavé articles, this soft washed linen is available in colours ranging from bright reds, vibrant greens, sky blues as well some essential shades of dark blues, light creams and natural browns.

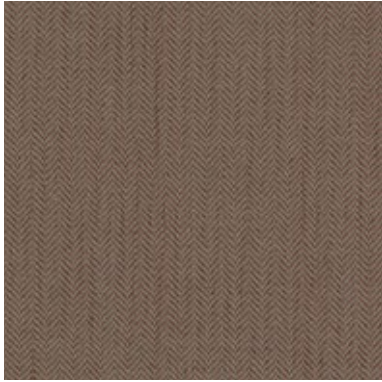
Moving through the collection you will see 8 shades in a heavier 260gm and for those looking for more structure a small selection at 400gm again in the essential linen colours, off white, cream, beige and navy blue.



Jacket

Model – Curzon

IMAGE
705743



Trouser

Model – W700

IMAGE
705743

Jacket

Model – Curzon

IMAGE
705744



Trouser

Model – W700

IMAGE
705744

IMAGE

The Image collection is one of Scabal's most versatile suiting collections. Made from a superfine merino wool, the fabric is constructed in a prunelle twill which enriches the weave and makes it very durable but with a very soft feel and a modern drape. This is classic suiting at its best and in this rounded collection you will find a large assortment of stripes, glen checks, micro designs and shadow weaves. However, it's within the checks that the prunelle weave is particularly effective and gives a more refined feel.

New this season is a selection of delicate Solaro fabrics in warm browns. The Solaro has the effect of making the cloth appear golden when it catches the light.

As you would expect, the base colours are the suiting staples of blues, greys, browns and blacks but if you examine the designs closely, you will discover some unexpectedly bright shades which adds a richness to the fabrics and gives the collection a contemporary look.

PRODUCT DETAILS

Knitwear:

· Penryn – 009_026 Cream

Knitwear:

· Penryn – 009_032 Almond



Jacket

Model – Kenton

CROSSOVER
754882



Trouser

Model – W700

CROSSOVER
754882

Jacket

Model – Kenton

TAORMINA
853414



Trouser

Model – W710

PURE LINEN
802993

CROSSOVER

Crossover is becoming the go-to collection for spring summer wardrobes. The colours and patterns are updated regularly but the concept remains the same. Fabrics are designed in pairs with one a plain and one a check, created to work together or separately. Select a suit from each design and then mix and match them to create unique outfits for every occasion.

This is our most colourful collection to date, constructed in a Super 130's wool the fabric has a soft, lightweight feel which is enhanced by the colour palette. Opening with a selection of soft pastel shades, combinations of light blue, pink, cream, grey and purple all feature the collection then becomes more intense with darker shades of tobacco, green, cobalt blue and browns creating checks of depth and richness.

TAORMINA

Named after the exclusive resort town on the coast of Scilly, Taormina returns this season refreshed and renewed. Designed with summer in mind the collection is relaxed and colourful with a combination of different constructions which fall into 3 chapters.

9 articles in a wool, silk and linen mix, open the range, this traditional summer combination creates cloths that are lightweight and naturally breathable with the silk adding an additional element of luxury.

New to the Scabal collections is the introduction of 11 articles made in Bamboo Viscose, this unique material adds an unrivalled richness to the colours along with a soft sheen that illuminates the fabrics and gives it a soft silky touch.

Colours range from bright and dramatic, reds, oranges, blues, purples and tobacco to more considered combinations of blues, browns and creams.

Closing the collection is a small selection of structured plains in dark blues designed to create a modern blazer ideal for those with more conservative tastes.

PRODUCT DETAILS

Knitwear:

· Penryn – 009_802 Tobacco

Knitwear:

· Penryn – 009_802 Tobacco



SPRING / SUMMER 2024

Jacket

Model – Soho

TAORMINA
853415



Trouser

Model – V720

PURE LINEN
802993

TAORMINA

Named after the exclusive resort town on the coast of Scilly, Taormina returns this season refreshed and renewed. Designed with summer in mind the collection is relaxed and colourful with a combination of different constructions which fall into 3 chapters.

9 articles in a wool, silk and linen mix, open the range, this traditional summer combination creates cloths that are lightweight and naturally breathable with the silk adding an additional element of luxury.

New to the Scabal collections is the introduction of 11 articles made in Bamboo Viscose, this unique material adds an unrivalled richness to the colours along with a soft sheen that illuminates the fabrics and gives it a soft silky touch.

Colours range from bright and dramatic, reds, oranges, blues, purples and tobacco to more considered combinations of blues, browns and creams.

Closing the collection is a small selection of structured plains in dark blues designed to create a modern blazer ideal for those with more conservative tastes.

PURE LINEN

Pure Linen is the must-have collection for summer staples. The Scabal collection offers a selection of weights, feels and colours to answer the needs of summer tailoring.

Opening with 20 delavé articles, this soft washed linen is available in colours ranging from bright reds, vibrant greens, sky blues as well some essential shades of dark blues, light creams and natural browns.

Moving through the collection you will see 8 shades in a heavier 260gm and for those looking for more structure a small selection at 400gm again in the essential linen colours, off white, cream, beige and navy blue.

PRODUCT DETAILS

Knitwear:

- Penryn – 008_149 Dark Grey Melange



Jacket

Model – Kenton

TAORMINA
853424



Trouser

Model – B700

PURE LINEN
802992

TAORMINA

Named after the exclusive resort town on the coast of Scilly, Taormina returns this season refreshed and renewed. Designed with summer in mind the collection is relaxed and colourful with a combination of different constructions which fall into 3 chapters.

9 articles in a wool, silk and linen mix, open the range, this traditional summer combination creates cloths that are lightweight and naturally breathable with the silk adding an additional element of luxury.

New to the Scabal collections is the introduction of 11 articles made in Bamboo Viscose, this unique material adds an unrivalled richness to the colours along with a soft sheen that illuminates the fabrics and gives it a soft silky touch.

Colours range from bright and dramatic, reds, oranges, blues, purples and tobacco to more considered combinations of blues, browns and creams.

Closing the collection is a small selection of structured plains in dark blues designed to create a modern blazer ideal for those with more conservative tastes.

PURE LINEN

Pure Linen is the must-have collection for summer staples. The Scabal collection offers a selection of weights, feels and colours to answer the needs of summer tailoring.

Opening with 20 delavé articles, this soft washed linen is available in colours ranging from bright reds, vibrant greens, sky blues as well some essential shades of dark blues, light creams and natural browns.

Moving through the collection you will see 8 shades in a heavier 260gm and for those looking for more structure a small selection at 400gm again in the essential linen colours, off white, cream, beige and navy blue.

PRODUCT DETAILS

Knitwear:

· Sefton – 009_032 Almond



Jacket

Model – Kenton

MOSAIC
853448



Trouser

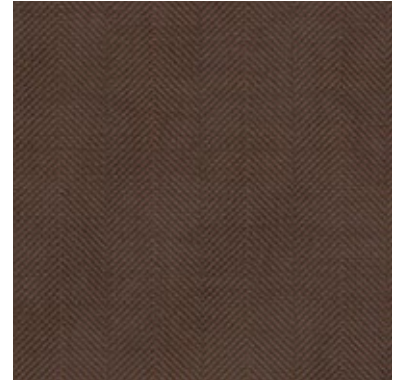
Model – B700

PURE LINEN
802992

Jacket

Model – Kenton

RHAPSODY
802946



Trouser

Model – B700

PURE LINEN
803009

MOSAIC

Mosaic is a concise collection of jacketing fabrics that feels like the essence of summer. Designed to celebrate checks, this collection is alive with colour both in the ground weave and in the patterns themselves.

The collection presents a rainbow of colour combinations, purples combined with light greys, creams with light blues and brighter blues with soft reds. The key seasonal colours are blues, greens, reds and browns which all feature either as the main colour or highlights within the checked patterns.

The 100% Super 130's wool is finished to give a dry hand feel which makes it as practical as it is beautiful choice for summer jackets.

RHAPSODY

Rhapsody returns this season resplendent with a selection of new colours. The collection opens with a selection of brightly coloured herringbones in a wool and silk mix. They have an elegant sheen which is achieved by bringing the silk to the face of the weave and demand to be seen in colours ranging from yellow through turquoise to purples.

This leads into another array of herringbones, these have more muted colours and a more distinct pattern which adds a richness to the colours of the superfine merino wool.

The final chapter showcases a soft basket weave which brings a easy texture to the fabrics. Colours here are more subtle, cool greys, light blues and olive green all feature alongside classic navy and black ideal for more traditional tastes.

This really is a collection for the colour loving jacket connoisseur.

PRODUCT DETAILS

Knitwear:

· Penryn – 009_023 Wood Beige

Knitwear:

· Sefton – 114_423 Rust Melange



Outerwear

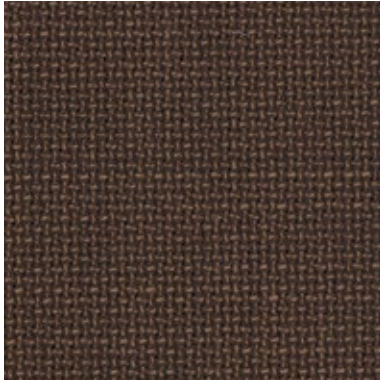
Model – Exmoor 1

RHAPSODY
802970

Trouser

Model – W700

PURE LINEN
803009



Outerwear

Model – Dartmoor 1

FINP
EXCLUSIVE
602211

Trouser

Model – V700

CASHMERE
COTTON
501691



EXMOOR

A Safari Jacket for the urban jungle. This is a statement summer garment, lightweight, unlined and easy to wear. It can be dressed up with a shirt and even a tie or dressed down with a light tee or sweater underneath. The belted waist, large patch pockets and button shoulder strap have a tropical military feel but when presented in a soft hopsack from the Rhapsody collection it takes on a far more casual feel. Sleeves can be buttoned, open or rolled up to suit the occasion.

DARTMOOR

The Scabal Dartmoor jacket has a utility feel to it but with unmistakable Scabal touches that make it a sartorial essential. Functionality is key, with technical fabrics that give weather protection, 4 large pockets at the front and a detachable, hidden hood. It has a light construction with soft Scabal Dynamic lining, a drawstring waist and a shoulder pleat with an internal elastic band which provides flexible movement for the wearer and ensures the jacket always keeps its shape.

PRODUCT DETAILS

Knitwear:

· Sefton – 114_801 Mid Brown Melange



Jacket

Model – Soho

MOSAIC
853442



Trouser

Model – B700

IMAGE
705782

MOSAIC

Mosaic is a concise collection of jacketing fabrics that feels like the essence of summer. Designed to celebrate checks, this collection is alive with colour both in the ground weave and in the patterns themselves.

The collection presents a rainbow of colour combinations, purples combined with light greys, creams with light blues and brighter blues with soft reds. The key seasonal colours are blues, greens, reds and browns which all feature either as the main colour or highlights within the checked patterns.

The 100% Super 130's wool is finished to give a dry hand feel which makes it as practical as it is beautiful choice for summer jackets.

IMAGE

The Image collection is one of Scabal's most versatile suiting collections. Made from a superfine merino wool, the fabric is constructed in a prunelle twill which enriches the weave and makes it very durable but with a very soft feel and a modern drape. This is classic suiting at its best and in this rounded collection you will find a large assortment of stripes, glen checks, micro designs and shadow weaves. However, it's within the checks that the prunelle weave is particularly effective and gives a more refined feel.

New this season is a selection of delicate Solaro fabrics in warm browns. The Solaro has the effect of making the cloth appear golden when it catches the light.

As you would expect, the base colours are the suiting staples of blues, greys, browns and blacks but if you examine the designs closely, you will discover some unexpectedly bright shades which adds a richness to the fabrics and gives the collection a contemporary look.

PRODUCT DETAILS

Knitwear:

· Penryn – 009_026 Cream



Jacket

Model – Curzon

TAORMINA
853412



Trouser

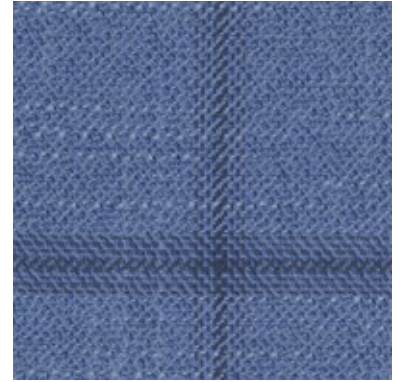
Model – V700

PURE LINEN
802998

Jacket

Model – Soho

MOSAIC
853422



Trouser

Model – W700

PURE LINEN
803000

TAORMINA

Named after the exclusive resort town on the coast of Scilly, Taormina returns this season refreshed and renewed. Designed with summer in mind the collection is relaxed and colourful with a combination of different constructions which fall into 3 chapters.

9 articles in a wool, silk and linen mix, open the range, this traditional summer combination creates cloths that are lightweight and naturally breathable with the silk adding an additional element of luxury.

New to the Scabal collections is the introduction of 11 articles made in Bamboo Viscose, this unique material adds an unrivalled richness to the colours along with a soft sheen that illuminates the fabrics and gives it a soft silky touch.

Colours range from bright and dramatic, reds, oranges, blues, purples and tobacco to more considered combinations of blues, browns and creams.

Closing the collection is a small selection of structured plains in dark blues designed to create a modern blazer ideal for those with more conservative tastes.

MOSAIC

Mosaic is a concise collection of jacketing fabrics that feels like the essence of summer. Designed to celebrate checks, this collection is alive with colour both in the ground weave and in the patterns themselves.

The collection presents a rainbow of colour combinations, purples combined with light greys, creams with light blues and brighter blues with soft reds. The key seasonal colours are blues, greens, reds and browns which all feature either as the main colour or highlights within the checked patterns.

The 100% Super 130's wool is finished to give a dry hand feel which makes it as practical as it is beautiful choice for summer jackets.

PRODUCT DETAILS

Knitwear:

· Lynton – 114_511 Light Blue Melange

Knitwear:

· Penryn – 009_480 Navy



Outerwear

Model – Marlow 1

FINP
EXCLUSIVE
403591



MARLOW I

The Marlow is Scabal's first luxury Trench Coat, this classic double breast silhouette is the perfect combination of style and functionality. Ideal for changeable weather, it has the ability to be worn over a suit for business or over casual layering at the weekend.

The 10-button front closure has an additional matching fabric belt to add shape and keep the coat close to the body. The belt has sewn eyelets and a genuine horn buckle which adds an additional element of luxury. There are adjustable cuffs, a metal hook at the neckline plus a removable collar strap to protect against the cold. This coat is lined with a combination of cupro and Scabal Cosmopolitan fabric which gives it a sartorial feel and an additional layer of warmth.

Available in a choice of technical fabrics including the new water repellent cotton, the Marlow is an ideal addition for any hard working wardrobe.

PRODUCT DETAILS

Formal Shirt:

· 300365

Photographed over Prisma 754472



Outerwear

Model – Warwick 2

FINP
EXCLUSIVE
403591

Trouser

Model – B700

PURE LINEN
802998



Outerwear

Model – Dartmoor 2

FINP
EXCLUSIVE
403591

Trouser

Model – B700

PURE LINEN
802998



WARWICK 2

This bomber jacket is designed for changeable weather conditions. Choose from a technical performance fabric with weather protection properties or from a wide selection of the Scabal cloth collections to create a more sartorial jacket. A soft rib on the base and cuffs adds some comfort and this model has been enhanced by the addition of a cupro lining and o deco stitch and a contrast stripe on the rib.

DARTMOOR

The Scabal Dartmoor jacket has a utility feel to it but with unmistakable Scabal touches that make it a sartorial essential. Functionality is key, with technical fabrics that give weather protection, 4 large pockets at the front and a detachable, hidden hood. It has a light construction with soft Scabal Dynamic lining, a drawstring waist and a shoulder pleat with an internal elastic band which provides flexible movement for the wearer and ensures the jacket always keeps its shape.

PRODUCT DETAILS

Knitwear:

· Contin – 114_515 Steel Blue Melange

Knitwear:

· Penryn – 009_480 Navy



Jacket

Model – Soho

MOSAIC
853463

Trouser

Model – V700

CASHMERE
COTTON
510706



Jacket

Model – Kenton

CROSSOVER
754890

Trouser

Model – V700

CROSSOVER
754890



MOSAIC

Mosaic is a concise collection of jacketing fabrics that feels like the essence of summer. Designed to celebrate checks, this collection is alive with colour both in the ground weave and in the patterns themselves.

The collection presents a rainbow of colour combinations, purples combined with light greys, creams with light blues and brighter blues with soft reds. The key seasonal colours are blues, greens, reds and browns which all feature either as the main colour or highlights within the checked patterns.

The 100% Super 130's wool is finished to give a dry hand feel which makes it as practical as it is beautiful choice for summer jackets.

CROSSOVER

Crossover is becoming the go-to collection for spring summer wardrobes. The colours and patterns are updated regularly but the concept remains the same. Fabrics are designed in pairs with one a plain and one a check, created to work together or separately. Select a suit from each design and then mix and match them to create unique outfits for every occasion.

This is our most colourful collection to date, constructed in a Super 130's wool the fabric has a soft, lightweight feel which is enhanced by the colour palette. Opening with a selection of soft pastel shades, combinations of light blue, pink, cream, grey and purple all feature the collection then becomes more intense with darker shades of tobacco, green, cobalt blue and browns creating checks of depth and richness.

PRODUCT DETAILS

Knitwear:

· Penryn – 009_322 Carmine

Knitwear:

· Sefton – 114_326 Dark Red Melange



Jacket

Model – Kenton

MOSAIC
853459



Trouser

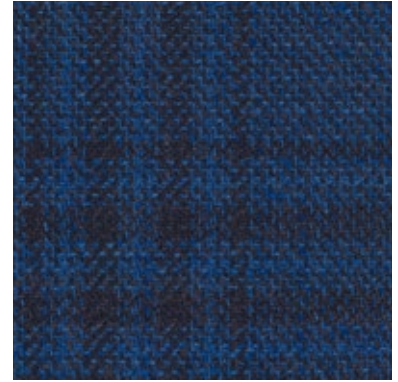
Model – W700

PURE LINEN
803009

Jacket

Model – Soho

TAORMINA
853418



Trouser

Model – W700

PURE LINEN
803009

MOSAIC

Mosaic is a concise collection of jacketing fabrics that feels like the essence of summer. Designed to celebrate checks, this collection is alive with colour both in the ground weave and in the patterns themselves.

The collection presents a rainbow of colour combinations, purples combined with light greys, creams with light blues and brighter blues with soft reds. The key seasonal colours are blues, greens, reds and browns which all feature either as the main colour or highlights within the checked patterns.

The 100% Super 130's wool is finished to give a dry hand feel which makes it as practical as it is beautiful choice for summer jackets.

TAORMINA

Named after the exclusive resort town on the coast of Scilly, Taormina returns this season refreshed and renewed. Designed with summer in mind the collection is relaxed and colourful with a combination of different constructions which fall into 3 chapters.

9 articles in a wool, silk and linen mix, open the range, this traditional summer combination creates cloths that are lightweight and naturally breathable with the silk adding an additional element of luxury.

New to the Scabal collections is the introduction of 11 articles made in Bamboo Viscose, this unique material adds an unrivalled richness to the colours along with a soft sheen that illuminates the fabrics and gives it a soft silky touch.

Colours range from bright and dramatic, reds, oranges, blues, purples and tobacco to more considered combinations of blues, browns and creams.

Closing the collection is a small selection of structured plains in dark blues designed to create a modern blazer ideal for those with more conservative tastes.

PRODUCT DETAILS

Knitwear:

· Penryn – 009_499 Ink Blue

Knitwear:

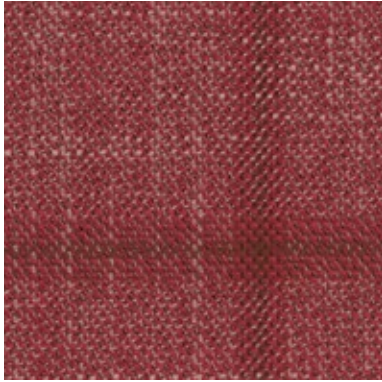
· Penryn – 009_480 Navy



Jacket

Model – Soho

TAORMINA
853423



Casual

Trouser

Model – Lewes R

CASHMERE
COTTON
501706

TAORMINA

Named after the exclusive resort town on the coast of Sicily, Taormina returns this season refreshed and renewed. Designed with summer in mind the collection is relaxed and colourful with a combination of different constructions which fall into 3 chapters.

9 articles in a wool, silk and linen mix, open the range, this traditional summer combination creates cloths that are lightweight and naturally breathable with the silk adding an additional element of luxury.

New to the Scabal collections is the introduction of 11 articles made in Bamboo Viscose, this unique material adds an unrivalled richness to the colours along with a soft sheen that illuminates the fabrics and gives it a soft silky touch.

Colours range from bright and dramatic, reds, oranges, blues, purples and tobacco to more considered combinations of blues, browns and creams.

Closing the collection is a small selection of structured plains in dark blues designed to create a modern blazer ideal for those with more conservative tastes.

PRODUCT DETAILS

Knitwear:

· Penryn – 009_317 Burgundy



Jacket

Model – Kenton

TAORMINA
853430



Jacket

Model – Kenton

TAORMINA
853421



Trouser

Model – V700

CASHMERE
COTTON
501706

TAORMINA

Named after the exclusive resort town on the coast of Scilly, Taormina returns this season refreshed and renewed. Designed with summer in mind the collection is relaxed and colourful with a combination of different constructions which fall into 3 chapters.

9 articles in a wool, silk and linen mix, open the range, this traditional summer combination creates cloths that are lightweight and naturally breathable with the silk adding an additional element of luxury.

New to the Scabal collections is the introduction of 11 articles made in Bamboo Viscose, this unique material adds an unrivalled richness to the colours along with a soft sheen that illuminates the fabrics and gives it a soft silky touch.

Colours range from bright and dramatic, reds, oranges, blues, purples and tobacco to more considered combinations of blues, browns and creams.

Closing the collection is a small selection of structured plains in dark blues designed to create a modern blazer ideal for those with more conservative tastes.

PRODUCT DETAILS

Knitwear:

· Penryn – 009_480 Navy

Knitwear:

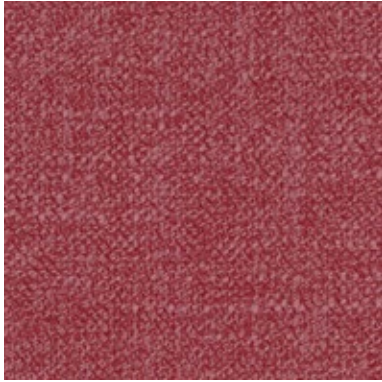
· Cawdor – 009_322 Carmine



Jacket

Model – Kenton

TAORMINA
853427



Trouser

Model – V700

CASHMERE
COTTON
501706

TAORMINA

Named after the exclusive resort town on the coast of Scilly, Taormina returns this season refreshed and renewed. Designed with summer in mind the collection is relaxed and colourful with a combination of different constructions which fall into 3 chapters.

9 articles in a wool, silk and linen mix, open the range, this traditional summer combination creates cloths that are lightweight and naturally breathable with the silk adding an additional element of luxury.

New to the Scabal collections is the introduction of 11 articles made in Bamboo Viscose, this unique material adds an unrivalled richness to the colours along with a soft sheen that illuminates the fabrics and gives it a soft silky touch.

Colours range from bright and dramatic, reds, oranges, blues, purples and tobacco to more considered combinations of blues, browns and creams.

Closing the collection is a small selection of structured plains in dark blues designed to create a modern blazer ideal for those with more conservative tastes.

PRODUCT DETAILS

Formal Shirt:

· 300233

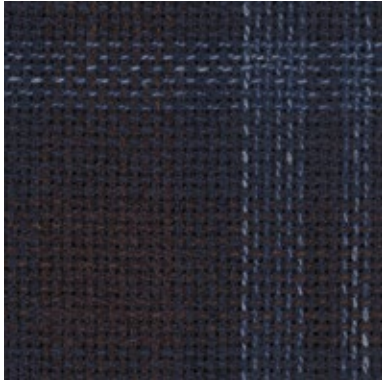


SPRING / SUMMER 2024

Jacket

Model – Kenton

TAORMINA
853419



Casual

Trousers

Model – Perth

PURE LINEN
802992

TAORMINA

Named after the exclusive resort town on the coast of Scilly, Taormina returns this season refreshed and renewed. Designed with summer in mind the collection is relaxed and colourful with a combination of different constructions which fall into 3 chapters.

9 articles in a wool, silk and linen mix, open the range, this traditional summer combination creates cloths that are lightweight and naturally breathable with the silk adding an additional element of luxury.

New to the Scabal collections is the introduction of 11 articles made in Bamboo Viscose, this unique material adds an unrivalled richness to the colours along with a soft sheen that illuminates the fabrics and gives it a soft silky touch.

Colours range from bright and dramatic, reds, oranges, blues, purples and tobacco to more considered combinations of blues, browns and creams.

Closing the collection is a small selection of structured plains in dark blues designed to create a modern blazer ideal for those with more conservative tastes.

PURE LINEN

Pure Linen is the must-have collection for summer staples. The Scabal collection offers a selection of weights, feels and colours to answer the needs of summer tailoring.

Opening with 20 delavé articles, this soft washed linen is available in colours ranging from bright reds, vibrant greens, sky blues as well some essential shades of dark blues, light creams and natural browns.

Moving through the collection you will see 8 shades in a heavier 260gm and for those looking for more structure a small selection at 400gm again in the essential linen colours, off white, cream, beige and navy blue.

PRODUCT DETAILS

Knitwear:

· Crewe – 009_813 Chocolate



Jacket

Model – Curzon

IMAGE
705769



Trouser

Model – W700

IMAGE
705769

Jacket

Model – Kenton

MOSAIC
853464



Trouser

Model – W700

CASHMERE
COTTON
501697

IMAGE

The Image collection is one of Scabal's most versatile suiting collections. Made from a superfine merino wool, the fabric is constructed in a prunelle twill which enriches the weave and makes it very durable but with a very soft feel and a modern drape. This is classic suiting at its best and in this rounded collection you will find a large assortment of stripes, glen checks, micro designs and shadow weaves. However, it's within the checks that the prunelle weave is particularly effective and gives a more refined feel.

New this season is a selection of delicate Solaro fabrics in warm browns. The Solaro has the effect of making the cloth appear golden when it catches the light.

As you would expect, the base colours are the suiting staples of blues, greys, browns and blacks but if you examine the designs closely, you will discover some unexpectedly bright shades which adds a richness to the fabrics and gives the collection a contemporary look.

MOSAIC

Mosaic is a concise collection of jacketing fabrics that feels like the essence of summer. Designed to celebrate checks, this collection is alive with colour both in the ground weave and in the patterns themselves.

The collection presents a rainbow of colour combinations, purples combined with light greys, creams with light blues and brighter blues with soft reds. The key seasonal colours are blues, greens, reds and browns which all feature either as the main colour or highlights within the checked patterns.

The 100% Super 130's wool is finished to give a dry hand feel which makes it as practical as it is beautiful choice for summer jackets.

PRODUCT DETAILS

Knitwear:

· Crewe – 009_480 Navy

Knitwear:

· Crewe – 009_813 Chocolate



SPRING / SUMMER 2024

Outerwear

Model – Warwick 6

PRISMA
754483



Casual Trousers

Model – Lewes R

PRISMA
754483

WARWICK 6

This classic Scabal jacket continues to evolve this season with the introduction of the new Warwick 6. This edition still shares some of the traditional Warwick details, the double slider front zip, slanted side pockets and the inside phone pocket but it is designed to replace a suit jacket. The flat shirt collar, buttoned cuffs and jacket hems are all made in the same fabric as the jacket to give a very elegant and sartorial feel intended to elevate a casual look.

Available in both lined and unlined versions in a wide choice of Scabal suiting fabrics.

PRISMA

Inspired by the way light reflects on glass, the Prisma collection is a concise selection of lightweight summer suiting in a rainbow of colours.

This Super 120's wool, has a contrasting warp and weft, unusually the weft is a lighter yarn with the warp the darker colour this adds a unique character and gives a traditional bowater appearance to the fabrics. The result is a contemporary collection with a soft dry hand feel making it ideal for summer suiting.

PRODUCT DETAILS

Knitwear:

· Crewe – 009_813 Chocolate



THE ROMANTIC

Jacket

Model – Kenton

SLEEK
754905



Trouser

Model – W700

SLEEK
754905

Jacket

Model – Kenton

SLEEK
754906



Trouser

Model – W800

SLEEK
754906

SLEEK

This elegant summer collection has been renewed this season. Constructed from Super 150's wool with 15% silk to create a luxuriously lightweight fabric. This feeling is enhanced but the colour palette which opens with a selection of muted pastels featuring caramel and peppermint plains followed by a selection of delicate window pane checks. Colours and designs then become richer with a selection of tonal patterns and designs across shades of blue and grey.

Sleek is the ideal collection to create a contemporary summer suit or jacket ideal for work or play.

PRODUCT DETAILS

Formal Shirt:

· 300224

Formal Shirt:

· 300224

SPRING / SUMMER 2024



Jacket

Model – Kenton

SLEEK
754907



Trouser

Model – W700

SLEEK
754907

SLEEK

This elegant summer collection has been renewed this season. Constructed from Super 150's wool with 15% silk to create a luxuriously lightweight fabric. This feeling is enhanced but the colour palette which opens with a selection of muted pastels featuring caramel and peppermint plains followed by a selection of delicate window pane checks. Colours and designs then become richer with a selection of tonal patterns and designs across shades of blue and grey.

Sleek is the ideal collection to create a contemporary summer suit or jacket ideal for work or play.

PRODUCT DETAILS

Formal Shirt:

· 300224



THE ROMANTIC

Jacket

Model – Soho

SLEEK
754904



Trouser

Model – W700

SLEEK
754904

Jacket

Model – Soho

SLEEK
754903



Trouser

Model – W700

SLEEK
754903

SLEEK

This elegant summer collection has been renewed this season. Constructed from Super 150's wool with 15% silk to create a luxuriously lightweight fabric. This feeling is enhanced but the colour palette which opens with a selection of muted pastels featuring caramel and peppermint plains followed by a selection of delicate window pane checks. Colours and designs then become richer with a selection of tonal patterns and designs across shades of blue and grey.

Sleek is the ideal collection to create a contemporary summer suit or jacket ideal for work or play.

PRODUCT DETAILS

Formal Shirt:

· 300226

Formal Shirt:

· 300226

SPRING / SUMMER 2024



THE ROMANTIC

Jacket

Model – Soho

SLEEK
754902



Trouser

Model – W700

SLEEK
754902

Jacket

Model – Soho

SLEEK
754921



Trouser

Model – W700

SLEEK
754921

SLEEK

This elegant summer collection has been renewed this season. Constructed from Super 150's wool with 15% silk to create a luxuriously lightweight fabric. This feeling is enhanced but the colour palette which opens with a selection of muted pastels featuring caramel and peppermint plains followed by a selection of delicate window pane checks. Colours and designs then become richer with a selection of tonal patterns and designs across shades of blue and grey.

Sleek is the ideal collection to create a contemporary summer suit or jacket ideal for work or play.

PRODUCT DETAILS

Formal Shirt:

· 300227

Formal Shirt:

· 300227

SPRING / SUMMER 2024

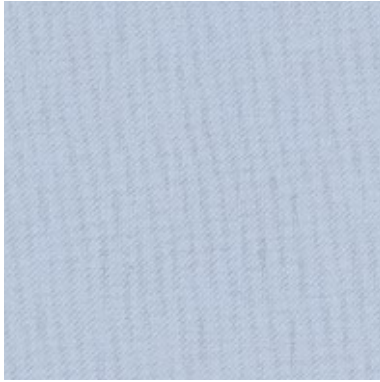


THE ROMANTIC

Jacket

Model – Soho

NEW DELUXE
501502



Trouser

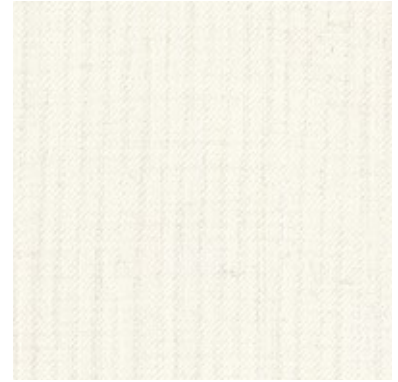
Model – W700

NEW DELUXE
501502

Jacket

Model – Soho

NEW DELUXE
501501



Trouser

Model – W700

NEW DELUXE
501501

NEW DELUXE

One of the foundations of the Scabal fabric collections, New Deluxe has been renewed for a new decade. A true year-round collection of plains, with over 70 colours to choose from, including 12 brand new shades and the introduction of a selection of melanges in classic suiting colours for the gentleman that wants some added interest and texture.

The Super 100's wool makes for a very adaptable cloth that is as easy to care for, as it is to tailor and at 260gm the Prunelle weave adds a comfortable wearing quality making it a versatile choice for suits, trousers, or jackets.

PRODUCT DETAILS

Knitwear:

· Penryn – 009 487 Metal Blue

Knitwear:

· Penryn – 009_026 Cream

SPRING / SUMMER 2024



SPRING / SUMMER 2024

Jacket

Model – Kensington

SUMMER
CASHMERE
754562



Trouser

Model – F710

SUMMER
CASHMERE
754562

KENSINGTON

The Kensington is a new model of tailoring from Scabal. It has a looser more relaxed silhouette and is designed to appeal to a more trend led client. Its matching trouser (F710) is also more generous on the leg adding to an overall feeling of comfort and style.

SUMMER CASHMERE

Who says you can't enjoy the luxurious feel of cashmere in the summer months as well? Certainly not the design team at Scabal. They have woven this favoured fibre into a super lightweight worsted cloth ideal for jackets and suits no matter how warm the climate. The superior weave also gives a natural crease resistance which makes this collection an ideal travel companion.

This is a carefully curated collection of 14 articles. Each one designed to create a statement piece that is robust enough to last through many summers. The colour choice reflects the season with off white, soft camel, red, and greens sitting alongside a selection of blues and greys

Now you can enjoy the soft feel of luxury cashmere year-round.

PRODUCT DETAILS

Knitwear:

· Penryn – 009_023 Wood Beige



Jacket

Model – Kenton

SUMMER
CASHMERE
754561



Casual Trousers

Model – Perth

SUMMER
CASHMERE
754561

SUMMER CASHMERE

Who says you can't enjoy the luxurious feel of cashmere in the summer months as well? Certainly not the design team at Scabal. They have woven this favoured fibre into a super lightweight worsted cloth ideal for jackets and suits no matter how warm the climate. The superior weave also gives a natural crease resistance which makes this collection an ideal travel companion.

This is a carefully curated collection of 14 articles. Each one designed to create a statement piece that is robust enough to last through many summers. The colour choice reflects the season with off white, soft camel, red, and greens sitting alongside a selection of blues and greys

Now you can enjoy the soft feel of luxury cashmere year-round.

PRODUCT DETAILS

Knitwear:

· Penryn – 009_023 Wood Beige



Jacket

Model – Soho

SUMMER
CASHMERE
754565



Trouser

Model – W700

SUMMER
CASHMERE
754565

SUMMER CASHMERE

Who says you can't enjoy the luxurious feel of cashmere in the summer months as well? Certainly not the design team at Scabal. They have woven this favoured fibre into a super lightweight worsted cloth ideal for jackets and suits no matter how warm the climate. The superior weave also gives a natural crease resistance which makes this collection an ideal travel companion.

This is a carefully curated collection of 14 articles. Each one designed to create a statement piece that is robust enough to last through many summers. The colour choice reflects the season with off white, soft camel, red, and greens sitting alongside a selection of blues and greys

Now you can enjoy the soft feel of luxury cashmere year-round.

PRODUCT DETAILS

Knitwear:

· Penryn – 009_137 Light Grey



Jacket

Model – Curzon

SUMMER
CASHMERE
754566



Trouser

Model – W725

SUMMER
CASHMERE
754566

SUMMER CASHMERE

Who says you can't enjoy the luxurious feel of cashmere in the summer months as well? Certainly not the design team at Scabal. They have woven this favoured fibre into a super lightweight worsted cloth ideal for jackets and suits no matter how warm the climate. The superior weave also gives a natural crease resistance which makes this collection an ideal travel companion.

This is a carefully curated collection of 14 articles. Each one designed to create a statement piece that is robust enough to last through many summers. The colour choice reflects the season with off white, soft camel, red, and greens sitting alongside a selection of blues and greys

Now you can enjoy the soft feel of luxury cashmere year-round.

PRODUCT DETAILS

Knitwear:

· Penryn – 009_150 Dove Grey