



AW23 COLLECTION



## Jacket

Model – Kenton

AUTUMN  
LEAVES  
853389



## Jacket

Model – Kenton

## Casual Woven Trousers

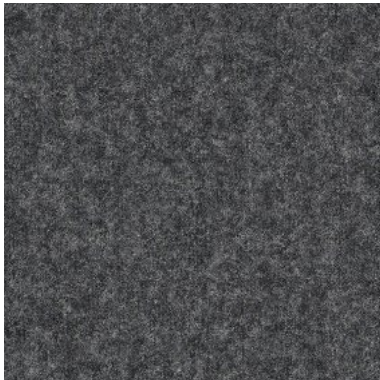
MAGUS  
501722



## Trouser

Model – W700

FLANNEL  
& SAXONY  
705885



### AUTUMN LEAVES

As its name suggests, Autumn leaves is designed with the colours of fall in mind. Divided into two chapters the first is a soft wool with added cashmere and the second is 100% extra fine Merino wool, both qualities are woven in a seasonal 320gm weight to give the additional warmth needed in the colder months.

The collection opens with a selection of bold checks with a bright red leading the way, it moves through a range of fancy checks each one with an individual feel and closes with a dramatic selection of plains with a distinctive light and dark twisted yarn effect which adds depth and character.

Colours are wide and varied, reds, browns, greens, burgundy, rust, a selection of blues, greys and winter whites all feature with many designs including multiple colour combinations.

### MAGUS

The new Magus collection builds on the success of its predecessor Wizard, to present a winter selection of luxury suiting fabrics combining Super 160's wool with a natural stretch created purely by the skill of the weavers at the mill.

This considered collection of 14 articles has a soft milled finish and is perfect to add warmth and softness during the colder months. When combined with the superior wool, the stretch characteristics create fabrics that are ideal for the daily requirements of contemporary garments.

The fabrics colours are plain but essential, ranging from a light cream through soft greys, warm camels, a selection of blues and even a pure black.

### PRODUCT DETAILS

Knitwear:

- Drumberg – 001\_810  
Light Camel

Knitwear:

- Telford – 006\_001  
Off White



---

## Jacket

Model – Chelsea

## Trouser

Model – V710

MAGUS

501721



## Outerwear

Model – Overcoat

ZEUS

853351

## Trouser

Model – W725

FLANNEL

& SAXONY

705882



## CHELSEA

Scabal continues to evolve its tailoring collections with the introduction of the Chelsea shirt jacket. Designed to be a hybrid with the look of a jacket but with the lightness and comfort of wearing a shirt. It gives the wearer the opportunity to create different looks by changing, how it is worn and what it is worn with. It is also available as made to measure in a wide selection of Scabal fabrics.

The design is simple and elegant with the sartorial features that you expect from Scabal, unlined to add to the soft feel, stylish patch pockets on the front but the clever construction allows for a useful hidden pocket on the inside as well.

This is a truly versatile garment, wear it open with a lightweight knit or t shirt underneath for a casual look or worn closed with a tonal turtle neck and matching trousers to project a more considered style.

---

## PRODUCT DETAILS

Knitwear:

- Telford – 006\_001
- Off White

Knitwear:

- Banbury-128-001
- Off White



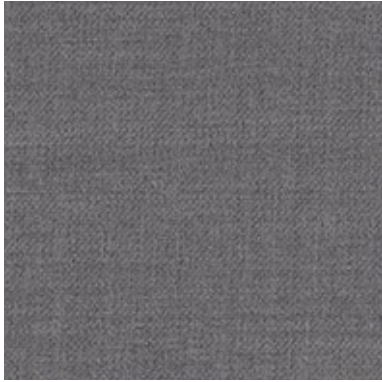


---

## Suit

Model – Kenton  
Light

CHAMPION  
754811



## Outerwear

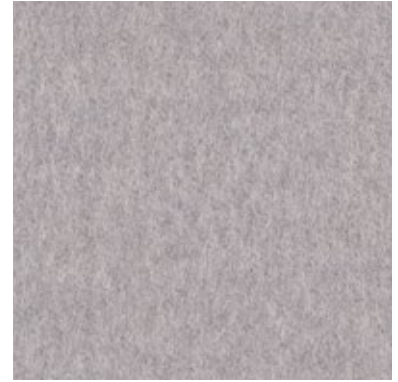
Model – Nelson 3

ZEUS  
853352

## Casual Woven Trousers

Model – Perth

FLANNEL  
& SAXONY  
705884



## KENTON LIGHT

The Kenton model was always designed to be lightweight and comfortable with its unconstructed and unlined characteristics but now it has evolved even further with the introduction of the new Kenton Light. This jacket takes comfort to the next level.

Our design team studied the Kenton in detail trying to find ways to reduce the weight and thickness of the garment with the objective of creating a jacket that feels like you are not wearing it. The original interlining was removed along with the distinctive butterfly shoulder lining. In its place expert craftsmanship has produced a jacket with a superior internal construction which itself acts as the frame of the jacket. External Patch pockets are cleverly designed to host internal pockets eliminating the need for the traditional chest pockets and adding a pocket that won't hang or drag down the line of the jacket.

## NELSON 3

A traditional peacoat ideal for relaxed casual wear, unconstructed and unlined it is designed for city life to fulfil the constant need for adaptable clothes, a simple top layer that can be combined with warm knits or gilets to create a more robust winter outfit or worn with a light jersey or shirt in the transitional months.

---

## PRODUCT DETAILS

### Knitwear:

- Telford – 006\_134  
Mid Grey Melange

### Knitwear:

- Banbury – 145\_136  
Light Grey Mouline





---

## Jacket

Model – Kenton  
Light

AUTUMN  
LEAVES  
853384



## Casual Woven Trouser

Model – Perth

FLANNEL  
& SAXONY  
705883

---

## Jacket

Model – Soho

AUTUMN  
LEAVES  
853385



## Casual Woven Trouser

Model – V700

FLANNEL  
& SAXONY  
705883

## KENTON LIGHT

The Kenton model was always designed to be lightweight and comfortable with its unconstructed and unlined characteristics but now it has evolved even further with the introduction of the new Kenton Light. This jacket takes comfort to the next level.

Our design team studied the Kenton in detail trying to find ways to reduce the weight and thickness of the garment with the objective of creating a jacket that feels like you are not wearing it. The original interlining was removed along with the distinctive butterfly shoulder lining. In its place expert craftsmanship has produced a jacket with a superior internal construction which itself acts as the frame of the jacket. External Patch pockets are cleverly designed to host internal pockets eliminating the need for the traditional chest pockets and adding a pocket that won't hang or drag down the line of the jacket.

---

## PRODUCT DETAILS

### Knitwear:

- Drumberg – 001\_001  
Off White

---

### Knitwear:

- Drumberg – 001\_001  
Off White



## Jacket

Model – Soho Blue  
Line

AUTUMN  
LEAVES  
853392



## Trouser

Model – G725

CORDUROY  
501651

## Outerwear

Model – Plymouth 1

## Trouser

Model – V700

FLANNEL  
& SAXONY  
705897



## PLYMOUTH 1

The Plymouth is an unlined overshirt. Designed as a fashion piece to be worn as an over layer combined with jersey or knitwear. It has a button front closure with two large flap pockets and 2 concealed side pockets. Create a more casual look by selecting a soft fabric from the Cashmere cotton collection or for a more luxurious summer feel select something from Nobility with its wool and silk combination. For season long winter elegance, choose from Sonata's soft herringbones or from a large choice in the Flannel & Saxony collection

### AUTUMN LEAVES

As its name suggests, Autumn leaves is designed with the colours of fall in mind. Divided into two chapters the first is a soft wool with added cashmere and the second is 100% extra fine Merino wool, both qualities are woven in a seasonal 320gm weight to give the additional warmth needed in the colder months.

The collection opens with a selection of bold checks with a bright red leading the way, it moves through a range of fancy checks each one with an individual feel and closes with a dramatic selection of plains with a distinctive light and dark twisted yarn effect which adds depth and character.

Colour are wide and varied, reds, browns, greens, burgundy, rust, a selection of blues, greys and winter whites all feature with many designs including multiple colour combinations.

## PRODUCT DETAILS

### Formal Shirt:

· 300359

### Knitwear:

· Telford – 006\_803  
Camel

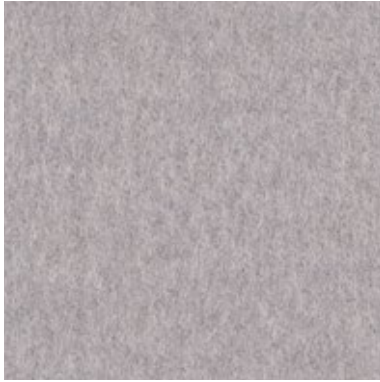


---

## Outerwear

Model – Penrith 1

ZEUS  
853352



## Outerwear

Model – Bedford 1

ZEUS  
853351

## Trouser

Model – W710

FLANNEL  
& SAXONY  
705882



## PENRITH I

The perfect transeasonal piece, designed as an overcoat and styled as a jacket. The Penrith is a tailored silhouette available in a choice of heavier weight fabrics to give additional warmth in the winter months, it also has a collar that can be left open or closed giving the jacket 2 different looks and also added protection against the cold when needed.

## BEDFORD I

For the ultimate in winter wear Scabal have created this padded parka coat. It has a fur trim on the hood which can be removed, a hidden two way zip closure and a soft rib on the inside cuffs all designed to help keep the winter cold out. It is available in a wide choice of fabrics including some options that are exclusive to the Scabal Trend capsules and not available in any bunches.

---

## PRODUCT DETAILS

### Knitwear:

- Bakewell – 001\_001  
Off White

### Knitted Trousers:

- Eton – 001\_001  
Off White

### Knitwear:

- Crewe – 006\_134  
Mid Grey Melange





## Outerwear

Model – Dartmoor 3

ZEUS  
853361

## Trouser

Model – W700

FLANNEL  
& SAXONY  
705898



## Leather

Model – Truro –  
142\_032  
Curly Shearling  
Almond

## Trouser

Denim

## DARTMOOR 3

The Dartmoor jacket has a utility feel to it but with unmistakable Scabal touches that make it a wardrobe essential. Functionality is key, with 4 large front pockets, a detachable, hidden hood and a collar strap with snap button. For added comfort it has an inner drawstring waist and a shoulder pleat with an internal elastic band which provides flexible movement and ensures the jacket always keeps its shape. Now available in a selection of Scabal fabrics designed to give it a more sartorial look than the original Dartmoor.

### ZEUS

This iconic overcoat collection returns this season refreshed with a wide selection of new colours, designs and patterns.

The collection opens with a selection of statement checks in a wool and cashmere combination, the designs are enhanced by the colour choices of winter white, soft brown and classic navy. Within the 100% wool selection there is a wide choice of more traditional overcoating patterns before the collection moves into an essential selection of plain colours in the heavier weight of 520gm.

The pinnacle of the collection is a large selection of luxury cashmere articles. Select a traditional finish or for the ultimate in luxury the fabrics with a stunning ripple finish.

## PRODUCT DETAILS

### Knitwear:

- Totnes – 145\_022  
Beige Melange

### Casual Shirt:

- Casual Shirt – 117\_027  
Baby Corduroy

### Knitwear:

- Harrow – 002\_001  
Off White



## Leather

Model – Havant –  
141\_030 Shearling  
Warm Beige

---

## PRODUCT DETAILS

### Knitwear:

· Bakewell – 003\_146  
Smoke Melange

### Knitted Trousers:

· Eton – 003\_146  
Smoke Melange





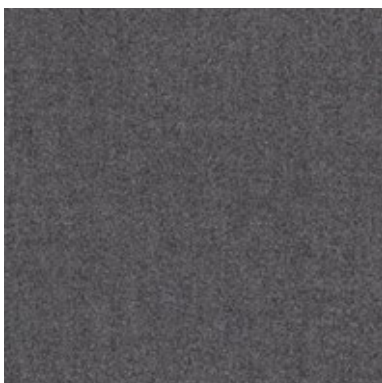
## Jacket

Model – Soho  
Blue Line

## Trouser

Model – W700

MIRACLE  
754769



## Jacket

Model – Soho  
Blue Line With  
Handmade Options

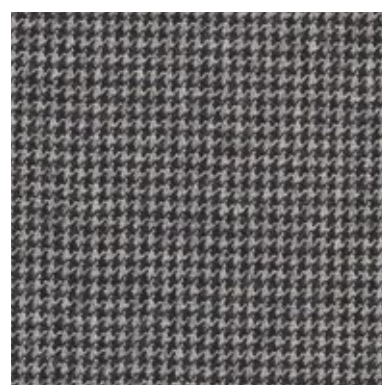
HYBRID  
754823



## Trouser

Model – V725

HYBRID  
754824



### MIRACLE

The Miracle collection is renewed this season with a new selection of fresh colours and designs.

This exquisite collection is made from a superior 100% Super 180's wool, and is hand-crafted in England using a 4ply, twill-based construction at a seasonal 300gm. The result is a beautifully soft cloth which is surprisingly robust, practical and easy to tailor.

Patterns are considered and subtle, soft checks, shadow stripes and pinstripes all feature in the traditional suiting shades of blues, greys and blacks.

### HYBRID

The Hybrid concept continues to evolve this season becoming one of the most popular Scabal fabric concepts. Each design is created as a pair, the first a fancy design and its partner sharing the same colour base but with a more understated complementary look.

Create a suit from any fabric or a combination jacket and trouser for a more adaptable look. For the perfect working capsule, select 2 suits and then mix and match them to create endless different outfits.

### PRODUCT DETAILS

#### Knitwear:

- Telford – 006\_322  
Carmine

#### Knitwear:

- Telford – 006\_999  
Black



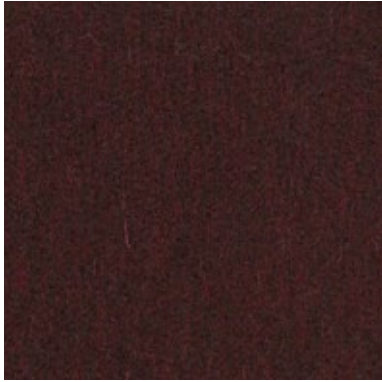
## Outerwear

Model – Winchester

ZEUS  
853369

## Trouser

Black Denim



## WINCHESTER

The Winchester overcoat has been designed to be worn over a suit but its contemporary styling means that it will work equally well over a casual look. The oversized patch pockets have a distinctive outline stitching which gives a modern feel to a classic wardrobe piece. The details continue at the back of the coat with a relaxed adjustable back belt and a lower back split with matching buttons. Presented in 100% wool Zeus overcoat fabric this is a versatile investment coat that will provide style and warmth for the winter months.

## ZEUS

This iconic overcoat collection returns this season refreshed with a wide selection of new colours, designs and patterns.

The collection opens with a selection of statement checks in a wool and cashmere combination, the designs are enhanced by the colour choices of winter white, soft brown and classic navy. Within the 100% wool selection there is a wide choice of more traditional overcoating patterns before the collection moves into an essential selection of plain colours in the heavier weight of 520gm.

The pinnacle of the collection is a large selection of luxury cashmere articles. Select a traditional finish or for the ultimate in luxury the fabrics with a stunning ripple finish.

---

## PRODUCT DETAILS

Knitwear:

- Rochester – 002\_318  
Dark Burgundy





## Outerwear

Model – Nelson 3

ZEUS  
853362

## Casual Woven Trouser

Model – Perth

FLANNEL  
& SAXONY  
705883



## Jacket

Model – Chelsea

AUTUMN  
LEAVES  
853396

## Casual Woven Trouser

Model – Lurgan

FLANNEL  
& SAXONY  
705903



## NELSON 3

A traditional peacoat ideal for relaxed casual wear, unconstructed and unlined it is designed for city life to fulfil the constant need for adaptable clothes, a simple top layer that can be combined with warm knits or gilets to create a more robust winter outfit or worn with a light jersey or shirt in the transitional months.

## CHELSEA

Scabal continues to evolve its tailoring collections with the introduction of the Chelsea shirt jacket. Designed to be a hybrid with the look of a jacket but with the lightness and comfort of wearing a shirt. It gives the wearer the opportunity to create different looks by changing, how it is worn and what it is worn with. It is also available as made to measure in a wide selection of Scabal fabrics.

The design is simple and elegant with the sartorial features that you expect from Scabal, unlined to add to the soft feel, stylish patch pockets on the front but the clever construction allows for a useful hidden pocket on the inside as well.

This is a truly versatile garment, wear it open with a lightweight knit or t shirt underneath for a casual look or worn closed with a tonal turtle neck and matching trousers to project a more considered style.

## PRODUCT DETAILS

Knitwear:

· Banbury – 144\_139  
Anthrasite

Knitwear:

· Drumberg – 001\_136  
Light Grey Melange





## Jacket

Model – Kenton

AUTUMN  
LEAVES  
853395

## Trouser

Denim



### AUTUMN LEAVES

As its name suggests, Autumn leaves is designed with the colours of fall in mind. Divided into two chapters the first is a soft wool with added cashmere and the second is 100% extra fine Merino wool, both qualities are woven in a seasonal 320gm weight to give the additional warmth needed in the colder months.

The collection opens with a selection of bold checks with a bright red leading the way, it moves through a range of fancy checks each one with an individual feel and closes with a dramatic selection of plains with a distinctive light and dark twisted yarn effect which adds depth and character.

Colour are wide and varied, reds, browns, greens, burgundy, rust, a selection of blues, greys and winter whites all feature with many designs including multiple colour combinations.

---

### PRODUCT DETAILS

Knitwear:

- Telford – 006\_319  
Dark Red

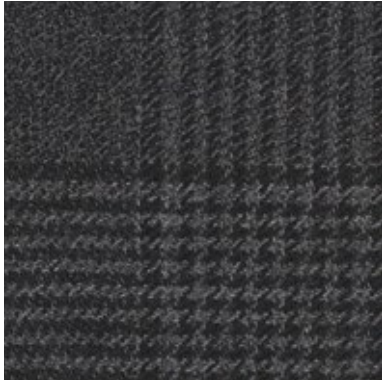


---

## Jacket

Model – Kenton

AUTUMN  
LEAVES  
853401



## Trouser

Model – W710

FLANNEL  
& SAXONY  
705895

---

## Jacket

Model – Kenton  
Light

CONNECT  
706058



## Trouser

Model – V715

FLANNEL  
& SAXONY  
705905

## KENTON LIGHT

The Kenton model was always designed to be lightweight and comfortable with its unconstructed and unlined characteristics but now it has evolved even further with the introduction of the new Kenton Light. This jacket takes comfort to the next level.

Our design team studied the Kenton in detail trying to find ways to reduce the weight and thickness of the garment with the objective of creating a jacket that feels like you are not wearing it. The original interlining was removed along with the distinctive butterfly shoulder lining. In its place expert craftsmanship has produced a jacket with a superior internal construction which itself acts as the frame of the jacket. External Patch pockets are cleverly designed to host internal pockets eliminating the need for the traditional chest pockets and adding a pocket that won't hang or drag down the line of the jacket.

---

## PRODUCT DETAILS

Knitwear:

- Telford – 006\_999  
Black

Knitwear:

- Telford – 006\_999  
Black







## Outerwear

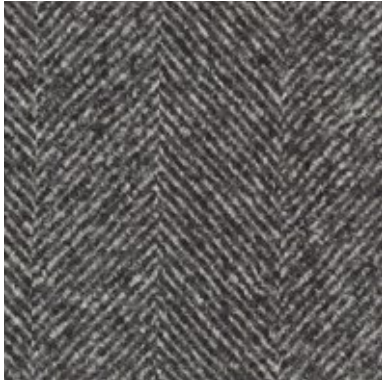
Model – Leeds 1

ZEUS  
853350

## Trouser

Model – W700

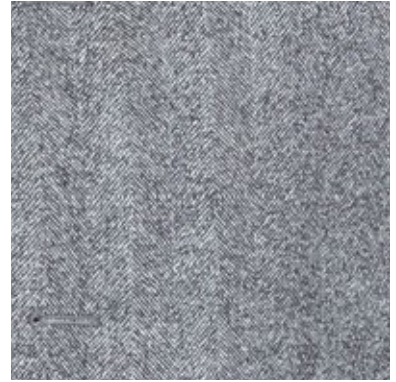
FLANNEL  
& SAXONY  
704804



## Outerwear

Model – Lynmouth 1

FINP EXCLUSIVE  
FABRIC  
602294



## LEEDS

Depending on the fabric choice, the Leeds coat can be worn as a smart business overcoat or as a stylish casual piece. It is unconstructed and unlined making it an adaptable top layer that will work well in the transitional weather months.

## LYNMOUTH 1

As the need for adaptable clothing continues, Scabal introduce the ultimate in sartorial layering. The Lynmouth has been designed to be worn both underneath another jacket to add warmth and adaptability or on its own to give a technical sporty look. This padded down jacket is designed to give the ultimate in warmth without adding any bulk through the use of the patented Thindown filling. The outer fabric is a robust nylon with the Thindown – a globally patented concept – bringing a lightweight, breathable, sustainable and natural down element to the jacket. It has the performance capability to keep you warm on the coldest of winter days through its innovative continuous sheet design, eliminating the need for stitching and thereby keeping warmth constant through the jacket.

---

## PRODUCT DETAILS

Knitwear:

- Evanton – 001\_999  
Black

Hat:

- Beanie  
Carmine Red



## Outerwear

Model – Stanfield 1

AUTUMN  
LEAVES  
853381

## Trouser

Model – G710

FLANNEL  
& SAXONY  
705903



## Outerwear

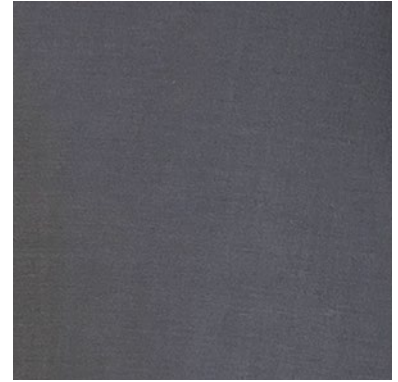
Model – Oxford 7

FINP EXCLUSIVE  
FABRIC  
602210

## Trouser

Model – Lurgan

FLANNEL  
& SAXONY  
705883



## STANFIELD

A casual jacket with a twist. The addition of a detachable internal waistcoat adds interest and style. The front zip gives the impression of a gilet but can be quickly removed to revert to a regular jacket. The option of a hooded waistcoat has been introduced to give a more sportswear feel. Choose from a selection of technical fabrics to protect against the cooler seasonality or keep it more sartorial with a large selection from Scabal Jacket collections. adding any bulk so your sartorial style is also protected.

## OXFORD 7

This elegant field jacket is now available in a padded, non-quilted version, the Oxford 7. It has the same casual look but the use of the patented Thindown filling gives it a more modern appearance and it feels more like a utility jacket.

The thindown also elevates the performance attributes of this jacket to a new level for Scabal. The jacket is available with the outer fabric in a internally laminated wool which adds some weatherproof characteristics but it is the Thindown – a globally patented concept – bringing a lightweight, breathable, sustainable and natural down element to the jacket that really makes the difference.

## PRODUCT DETAILS

Knitwear:

- Contin – 001\_322  
Carmine

Knitwear:

- Crawley –001\_143  
Dark Grey





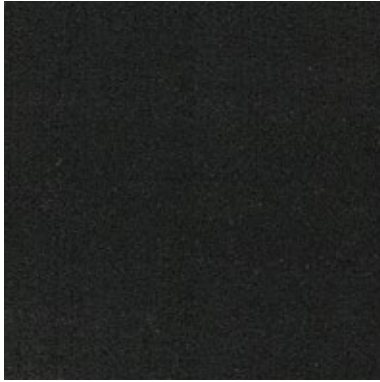
## Outerwear

Model – Overcoat

ZEUS  
853331

## Trouser

Black Denim



## ZEUS

This iconic overcoat collection returns this season refreshed with a wide selection of new colours, designs and patterns.

The collection opens with a selection of statement checks in a wool and cashmere combination, the designs are enhanced by the colour choices of winter white, soft brown and classic navy. Within the 100% wool selection there is a wide choice of more traditional overcoating patterns before the collection moves into an essential selection of plain colours in the heavier weight of 520gm.

The pinnacle of the collection is a large selection of luxury cashmere articles. Select a traditional finish or for the ultimate in luxury the fabrics with a stunning ripple finish.

---

## PRODUCT DETAILS

Knitwear:

· Telford – 006\_999  
Black

Scarf:

· Newry – 143\_999  
Black





## Jacket

Model – Soho  
Blue Line

CHAMPION  
754807

## Trouser

Model – G710



### CHAMPION

A new innovation from Scabal, the Champion collection has the feel of traditional British suiting but with the added element of stretch to create a cloth that fits the needs of modern suiting. The colours and designs are classic Scabal and there is a lot of choice, pick & picks, semi-classic checks and subtle shadow stripes all feature alongside a colour palette that includes some surprises, bright shades of blue, soft greens and a subtle autumnal browns and purple.

With its soft Super 120's wool, Champion is destined to become the go-to bunch for a classic suiting style with the added stretch bringing a contemporary attitude and functionality.

---

### PRODUCT DETAILS

Knitwear:

- Telford – 006\_318  
Dark Burgundy



## Jacket

Model – Kenton

MAGUS  
501727



## Trouser

Model – V700

## Jacket

Model – Soho

AUTUMN  
LEAVES  
853390



## Trouser

Model – V700

CORDUROY  
501662



### MAGUS

The new Magus collection builds on the success of its predecessor Wizard, to present a winter selection of luxury suiting fabrics combining Super 160's wool with a natural stretch created purely by the skill of the weavers at the mill.

This considered collection of 14 articles has a soft milled finish and is perfect to add warmth and softness during the colder months. When combined with the superior wool, the stretch characteristics create fabrics that are ideal for the daily requirements of contemporary garments.

The fabrics colours are plain but essential, ranging from a light cream through soft greys, warm camels, a selection of blues and even a pure black.

### AUTUMN LEAVES

As its name suggests, Autumn leaves is designed with the colours of fall in mind. Divided into two chapters the first is a soft wool with added cashmere and the second is 100% extra fine Merino wool, both qualities are woven in a seasonal 320gm weight to give the additional warmth needed in the colder months.

The collection opens with a selection of bold checks with a bright red leading the way, it moves through a range of fancy checks each one with an individual feel and closes with a dramatic selection of plains with a distinctive light and dark twisted yarn effect which adds depth and character.

Colour are wide and varied, reds, browns, greens, burgundy, rust, a selection of blues, greys and winter whites all feature with many designs including multiple colour combinations.

### PRODUCT DETAILS

Knitwear:

- Telford – 006\_318  
Dark Burgundy

Knitwear:

- Telford – 006\_318  
Dark Burgundy

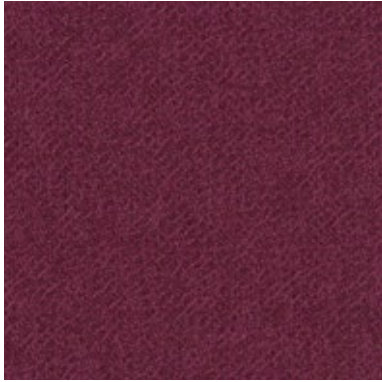




## Jacket

Model – Kenton  
Light

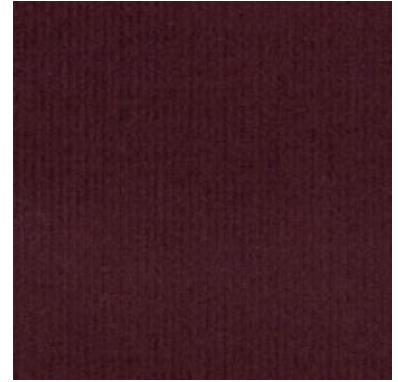
AUTUMN  
LEAVES  
853404



## Casual Woven Trousers

Model – Lurgan

CORDUROY  
501662



## KENTON LIGHT

The Kenton model was always designed to be lightweight and comfortable with its unconstructed and unlined characteristics but now it has evolved even further with the introduction of the new Kenton Light. This jacket takes comfort to the next level.

Our design team studied the Kenton in detail trying to find ways to reduce the weight and thickness of the garment with the objective of creating a jacket that feels like you are not wearing it. The original interlining was removed along with the distinctive butterfly shoulder lining. In its place expert craftsmanship has produced a jacket with a superior internal construction which itself acts as the frame of the jacket. External Patch pockets are cleverly designed to host internal pockets eliminating the need for the traditional chest pockets and adding a pocket that won't hang or drag down the line of the jacket.

---

## PRODUCT DETAILS

Knitwear:

- Telford – 006\_318  
Dark Burgundy



## Jacket

Model – Soho

AUTUMN  
LEAVES  
853387



## Jacket

Model – Soho Blue  
Line

AUTUMN  
LEAVES  
853406



## Trouser

Model – W700

FLANNEL &  
SAXONY  
705898



## Trouser

Model – W700

FLANNEL  
& SAXONY  
704784



### AUTUMN LEAVES

As its name suggests, Autumn leaves is designed with the colours of fall in mind. Divided into two chapters the first is a soft wool with added cashmere and the second is 100% extra fine Merino wool, both qualities are woven in a seasonal 320gm weight to give the additional warmth needed in the colder months.

The collection opens with a selection of bold checks with a bright red leading the way, it moves through a range of fancy checks each one with an individual feel and closes with a dramatic selection of plains with a distinctive light and dark twisted yarn effect which adds depth and character.

Colour are wide and varied, reds, browns, greens, burgundy, rust, a selection of blues, greys and winter whites all feature with many designs including multiple colour combinations.

### PRODUCT DETAILS

Knitwear:

- Telford – 006\_811  
Dark Brown Melange

Knitwear:

- Telford – 007\_798  
Brown





## Jacket

Model – Kenton

AUTUMN  
LEAVES  
853405



## Jacket

Model – Kenton

AUTUMN  
LEAVES  
853388



## Trouser

Model – W700

CORDUROY  
501661



## Trouser

Model –VS50

CORDUROY  
501661

### AUTUMN LEAVES

As its name suggests, Autumn leaves is designed with the colours of fall in mind. Divided into two chapters the first is a soft wool with added cashmere and the second is 100% extra fine Merino wool, both qualities are woven in a seasonal 320gm weight to give the additional warmth needed in the colder months.

The collection opens with a selection of bold checks with a bright red leading the way, it moves through a range of fancy checks each one with an individual feel and closes with a dramatic selection of plains with a distinctive light and dark twisted yarn effect which adds depth and character.

Colour are wide and varied, reds, browns, greens, burgundy, rust, a selection of blues, greys and winter whites all feature with many designs including multiple colour combinations.

### PRODUCT DETAILS

Knitwear:

- Drumberg – 001\_684  
Dark Green

Knitwear:

- Drumberg – 001\_452  
Cardinal Purple





## Outerwear

Model – Plymouth 1

CONNECT  
706062

## Trouser

Black Denim



## PLYMOUTH 1

The Plymouth is an unlined overshirt. Designed as a fashion piece to be worn as an over layer combined with jersey or knitwear. It has a button front closure with two large flap pockets and 2 concealed side pockets. Create a more casual look by selecting a soft fabric from the Cashmere cotton collection or for a more luxurious summer feel select something from Nobility with its wool and silk combination. For season long winter elegance, choose from Sonata's soft herringbones or from a large choice in the Flannel & Saxony collection

## CONNECT

A new innovation from Scabal, Connect is a contemporary range of fabrics designed with comfort and softness at its heart. The collection opens with a selection of textured fabrics, all with a knitted appearance and a soft feel, ideal to create, the relaxed garments required for a busy modern life. Although they appear knitted, these fabrics are all traditionally woven. It is the skills of the weavers that create this alternative look and finish.

The superior stretch throughout the entire collection ensures that the fabrics are equally suitable for a soft unconstructed jacket as a robust and hard-working pair of trousers. The added stretch brings some crease resistance but more importantly ensures that garments return to their original shape each time they are worn.

The collection closes with a small range of plain fabrics which have a deliberately overconstructed robust finish, and when combined with the colour palette of browns, greens, camel, blues and greys gives them a very modern look.

---

## PRODUCT DETAILS

Knitwear:

- Telford – 006\_318  
Dark Burgundy



## Jacket

Model – Soho Blue  
Line

HYBRID  
754825



## Trouser

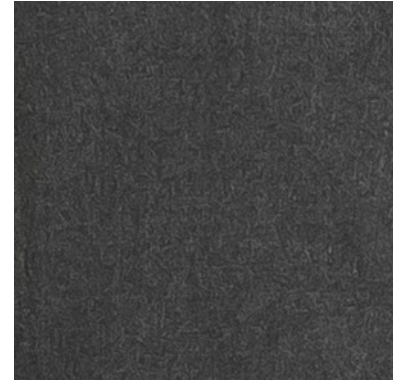
Model – V700

HYBRID  
754826

## Outerwear

Model – Oxford 7

TECHNICAL  
EXCLUSIVE  
COLLECTION  
602207



## Trouser

Denim

## OXFORD 7

Continuously evolving, the Oxford family of jackets has a new introduction this season. This elegant field jacket is now available in a padded, non-quilted version, the Oxford 7. It has the same casual look but the use of the patented Thindown filling gives it a more modern appearance and it feels more like a utility jacket.

The thindown also elevates the performance attributes of this jacket to a new level for Scabal. The jacket is available with the outer fabric in a internally laminated wool which adds some weatherproof characteristics but it is the Thindown – a globally patented concept – bringing a lightweight, breathable, sustainable and natural down element to the jacket that really makes the difference. It has the performance capability to keep you warm on the coldest of winter days through its innovative continuous sheet design eliminating the need for stitching and thereby keeping warmth constant through the jacket without adding any bulk so your sartorial style is also protected.

## PRODUCT DETAILS

Knitwear:

- Telford – 006\_811  
Dark Brown Melange

Knitwear:

- Banbury – 128\_001  
Off White







---

## Outerwear

Model – York

ZEUS  
853355

## Trouser

Denim



---

## Outerwear

Model – Dartmoor 3

ZEUS  
853355

## Trouser

Denim



## YORK

The York jacket is a new introduction this season. It takes its inspiration from a field jacket but as you would expect, it has some unmistakable Scabal touches to ensure it's a sartorial essential.

Functionality is key, it has 2 front pockets featuring a double entrance to enhance their practicality, there is a hidden hood within the collar and a detachable faux fur collar.

The coat is lined with soft fabric and there is an internal drawstring waist to keep the jacket in place on colder days. Leather trims on the collar and pockets add a touch of luxury.

Choose from a selection of overcoat weight fabrics to add warmth and comfort for the winter months.

## DARTMOOR 2

The Dartmoor jacket has a utility feel to it but with unmistakable Scabal touches that make it a wardrobe essential. Functionality is key, with 4 large front pockets, a detachable, hidden hood and a collar strap with snap button. It has a light construction and is half lined in a soft Silver Ghost fabric. For added comfort it has an inner drawstring waist and a shoulder pleat with an internal elastic band which provides flexible movement and ensures the jacket always keeps its shape. Now available in a selection of Scabal fabrics designed to give it a more sartorial look than the original Dartmoor.

---

## PRODUCT DETAILS

Knitwear:

- Telford – 006\_318  
Dark Burgundy

Knitwear:

- Banbury – 128\_001  
Off White



---

## Jacket

Model – Curzon  
Blue Line

MAGUS  
501723



## Trouser

Model – V715

---

## Jacket

Model – Soho  
Blue Line

MAGUS  
501732



## Trouser

Model – V700

### MAGUS

The new Magus collection builds on the success of its predecessor Wizard, to present a winter selection of luxury suiting fabrics combining Super 160's wool with a natural stretch created purely by the skill of the weavers at the mill.

This considered collection of 14 articles has a soft milled finish and is perfect to add warmth and softness during the colder months. When combined with the superior wool, the stretch characteristics create fabrics that are ideal for the daily requirements of contemporary garments.

The fabrics colours are plain but essential, ranging from a light cream through soft greys, warm camels, a selection of blues and even a pure black.

---

### PRODUCT DETAILS

#### Knitwear:

- Drumberg – 001\_810  
Light Camel

#### Casual Shirt:

- Casual Shirt – 107\_509  
Denim



## Overcoat

ZEUS  
853366



### ZEUS

This iconic overcoat collection returns this season refreshed with a wide selection of new colours, designs and patterns.

The collection opens with a selection of statement checks in a wool and cashmere combination, the designs are enhanced by the colour choices of winter white, soft brown and classic navy. Within the 100% wool selection there is a wide choice of more traditional overcoating patterns before the collection moves into an essential selection of plain colours in the heavier weight of 520gm.

The pinnacle of the collection is a large selection of luxury cashmere articles. Select a traditional finish or for the ultimate in luxury the fabrics with a stunning ripple finish.

---

### PRODUCT DETAILS

Photographed over  
Magus Suit – 501723





---

## Jacket

Model – Kenton  
Light

CONNECT  
706055



## Trouser

Model – G700

FLANNEL  
& SAXONY  
705901

---

## Jacket

Model – Soho

AUTUMN  
LEAVES  
853402



## Trouser

Model – G700

FLANNEL  
& SAXONY  
705901

## KENTON LIGHT

The Kenton model was always designed to be lightweight and comfortable with its unconstructed and unlined characteristics but now it has evolved even further with the introduction of the new Kenton Light. This jacket takes comfort to the next level.

Our design team studied the Kenton in detail trying to find ways to reduce the weight and thickness of the garment with the objective of creating a jacket that feels like you are not wearing it. The original interlining was removed along with the distinctive butterfly shoulder lining. In its place expert craftsmanship has produced a jacket with a superior internal construction which itself acts as the frame of the jacket. External Patch pockets are cleverly designed to host internal pockets eliminating the need for the traditional chest pockets and adding a pocket that won't hang or drag down the line of the jacket.

---

## PRODUCT DETAILS

### Knitwear:

- Telford – 004\_480  
Navy

### Knitwear:

- Crewe – 006\_480  
Navy



## Jacket

Model – Curzon

AUTUMN  
LEAVES  
853407



## Jacket

Model – Curzon

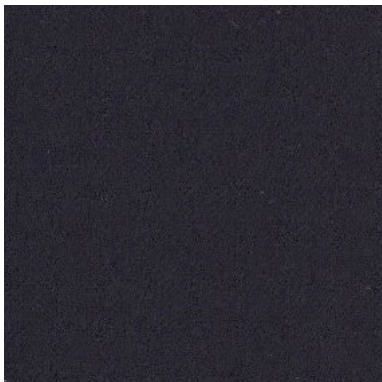
AUTUMN  
LEAVES  
853391



## Trouser

Model – G700

FLANNEL  
& SAXONY  
705907



## Trouser

Model – W700

CORDUROY  
501675



### AUTUMN LEAVES

As its name suggests, Autumn leaves is designed with the colours of fall in mind. Divided into two chapters the first is a soft wool with added cashmere and the second is 100% extra fine Merino wool, both qualities are woven in a seasonal 320gm weight to give the additional warmth needed in the colder months.

The collection opens with a selection of bold checks with a bright red leading the way, it moves through a range of fancy checks each one with an individual feel and closes with a dramatic selection of plains with a distinctive light and dark twisted yarn effect which adds depth and character.

Colour are wide and varied, reds, browns, greens, burgundy, rust, a selection of blues, greys and winter whites all feature with many designs including multiple colour combinations.

### PRODUCT DETAILS

Knitwear:

- Telford – 006\_480  
Navy

Knitwear:

- Drumberg – 001\_802  
Tobacco







---

Jacket

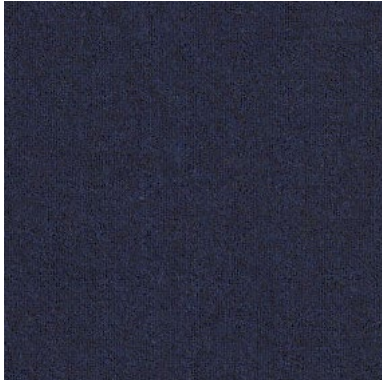
Model – Chelsea

Casual Woven

Trouser

Model – Perth

FLANNEL  
& SAXONY  
705901



---

Jacket

Model – Kenton

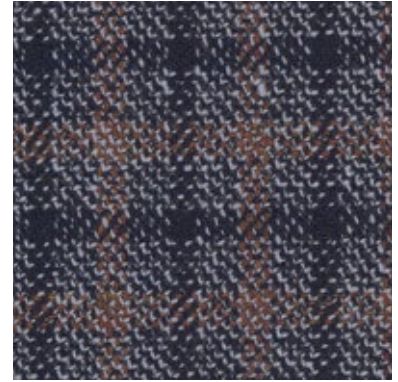
AUTUMN  
LEAVES  
853386

Casual Woven

Trouser

Model – Perth

FLANNEL  
& SAXONY  
705888



## CHELSEA

Scabal continues to evolve its tailoring collections with the introduction of the Chelsea shirt jacket. Designed to be a hybrid with the look of a jacket but with the lightness and comfort of wearing a shirt. It gives the wearer the opportunity to create different looks by changing, how it is worn and what it is worn with. It is also available as made to measure in a wide selection of Scabal fabrics.

The design is simple and elegant with the sartorial features that you expect from Scabal, unlined to add to the soft feel, stylish patch pockets on the front but the clever construction allows for a useful hidden pocket on the inside as well.

This is a truly versatile garment, wear it open with a lightweight knit or t shirt underneath for a casual look or worn closed with a tonal turtle neck and matching trousers to project a more considered style.

---

### PRODUCT DETAILS

Knitwear:

- Telford – 006\_480
- Navy

---

Knitwear:

- Telford – 006\_480
- Navy



---

## Overcoat

Model – Overcoat

ZEUS  
853332

## Trouser

Denim



## Leather

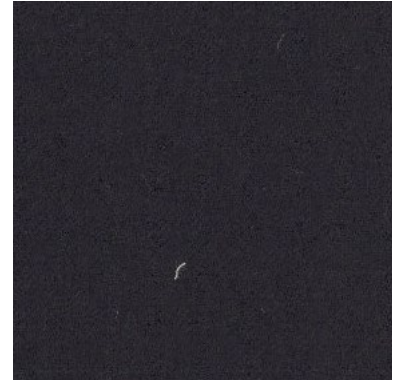
Model – Montrose –  
141\_480 Shearling

## Casual Woven

## Trouser

Model – Perth

FLANNEL  
& SAXONY  
705908



## ZEUS

This iconic overcoat collection returns this season refreshed with a wide selection of new colours, designs and patterns.

The collection opens with a selection of statement checks in a wool and cashmere combination, the designs are enhanced by the colour choices of winter white, soft brown and classic navy. Within the 100% wool selection there is a wide choice of more traditional overcoating patterns before the collection moves into an essential selection of plain colours in the heavier weight of 520gm.

The pinnacle of the collection is a large selection of luxury cashmere articles. Select a traditional finish or for the ultimate in luxury the fabrics with a stunning ripple finish.

---

## PRODUCT DETAILS

Knitwear:

- Banbury – 144\_480  
Navy

Knitwear:

- Drumberg – 001\_802  
Tobacco



## Outerwear

Model – Warwick 1

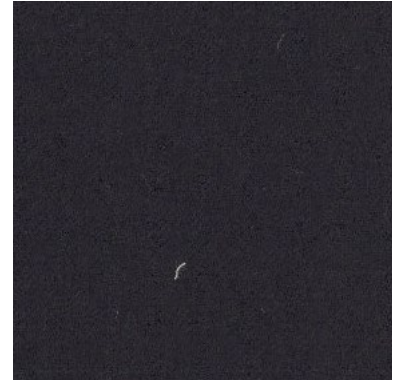
ZEUS  
853357



## Casual Woven Trousers

Model – Perth

FLANNEL  
& SAXONY  
705908



## WARWICK I

Taking inspiration from a classic Harrington jacket this bomber jacket is designed with a Scabal twist. It is padded for warmth and can be made in a selection of overcoating fabrics including some exclusive to the Scabal trend stories and not available in any bunches. The Warwick is finished with a soft rib on the hem and sleeves to add comfort and has two large patch pockets with both top and side entry to make it practical as well as stylish.

### ZEUS

This iconic overcoat collection returns this season refreshed with a wide selection of new colours, designs and patterns.

The collection opens with a selection of statement checks in a wool and cashmere combination, the designs are enhanced by the colour choices of winter white, soft brown and classic navy. Within the 100% wool selection there is a wide choice of more traditional overcoating patterns before the collection moves into an essential selection of plain colours in the heavier weight of 520gm.

The pinnacle of the collection is a large selection of luxury cashmere articles. Select a traditional finish or for the ultimate in luxury the fabrics with a stunning ripple finish.

---

## PRODUCT DETAILS

Knitwear:

- Drumberg – 001\_802  
Tobacco